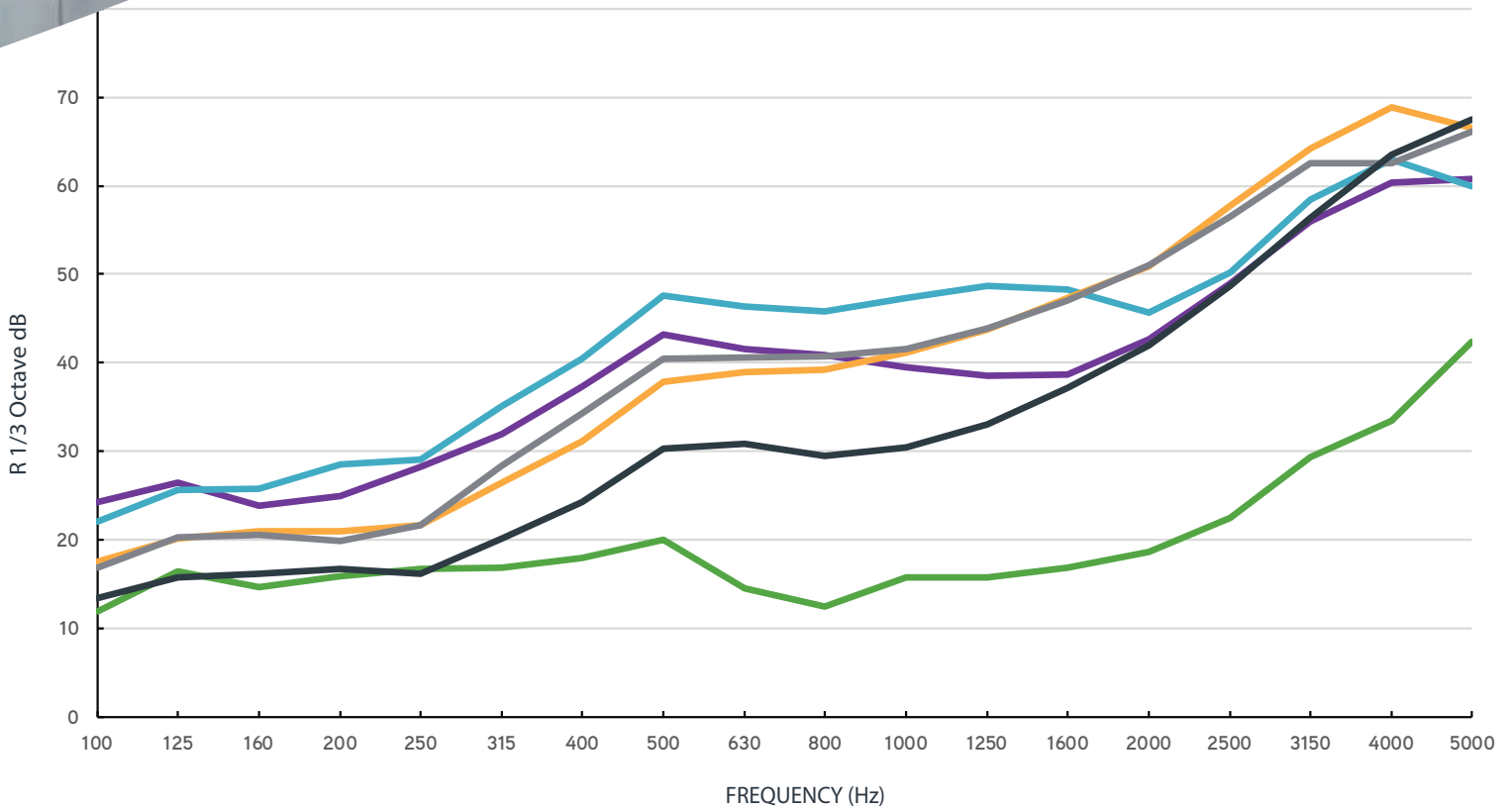


Stratocell Whisper®
100mm has a
Rw of 18dB according
to ISO717-1

**STRATOCELL WHISPER® 1000MM
SOUND REDUCTION INDEX R,
TO ISO10140-2, IN COMPARISON WITH
COMMON BARRIER MATERIALS.**



	100	125	160	200	250	315	400	500	630	800	1000	1250	1600	2000	2500	3150	4000	5000	Rw
Whisper 100	12	16	15	16	17	17	18	20	15	13	16	16	17	18.6	22.5	29	33.5	42.4	18
25 mm Plywood + Whisper 100	24	27	24	25	28	32	37	43	42	41	40	39	39	42.6	49	56	60.4	60.7	39
10 mm Fibre cement + Whisper 100 mm	22	26	26	29	29	35	41	48	46	46	47	49	48	45.7	50.2	58	63	59.9	43
1 mm Corten Sheet + Whisper 100 mm	18	20	21	21	22	27	31	38	39	39	41	44	47	50.9	57.7	64	68.8	66.6	37
3 mm Aluminium Plate + Whisper 100mm	17	20	21	20	22	28	34	40	41	41	42	44	47	51	56.5	63	62.5	66.1	37
0.4mm Painted Steel Sheet + 100 mm	13	16	16	17	16	20	24	30	31	30	31	33	37	41.9	48.7	56	63.5	67.5	30

Stratocell Whisper® installed facing noise source, edges and joints sealed.

Disclaimer: As every installation is unique, we cannot guarantee the repeat occurrence of these test results. We recommend employing an acoustic consultant and using an accredited test lab prior to purchasing product.