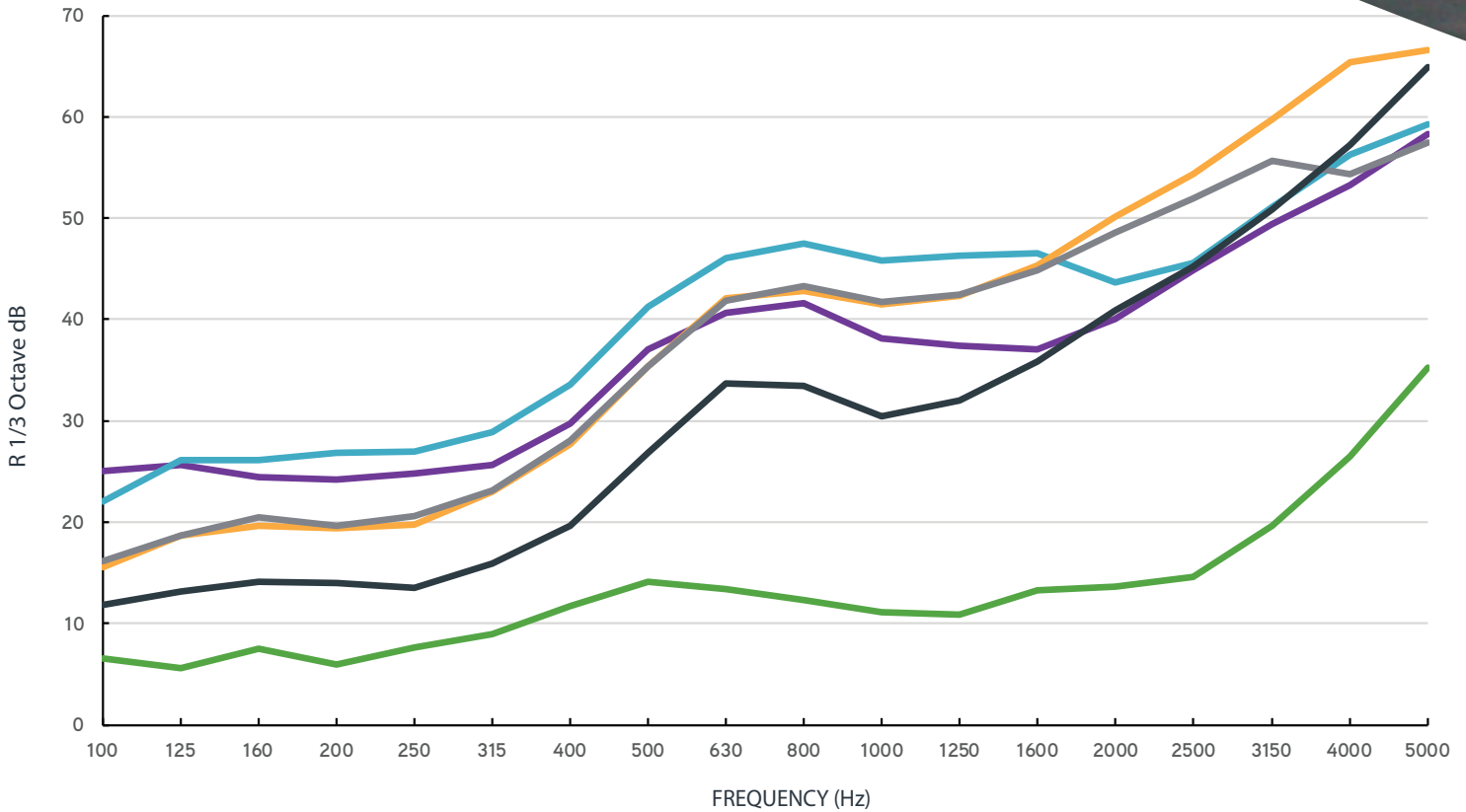


Stratocell Whisper®  
50mm has a  
Rw of 13.8 dB  
according  
to ISO717-1

**STRATOCELL WHISPER® 50MM  
SOUND REDUCTION INDEX R,  
TO ISO10140-2, IN COMPARISON WITH  
COMMON BARRIER MATERIALS.**



	100	125	160	200	250	315	400	500	630	800	1000	1250	1600	2000	2500	3150	4000	5000	Rw
Whisper 50	6.6	5.6	7.5	5.9	7.6	9	11.7	14.1	13.4	12.3	11.1	10.9	13.3	13.6	14.6	19.7	26.5	35.2	13.8
25 mm Plywood + Whisper 50	25.1	25.6	24.5	24.2	24.8	25.7	29.7	37	40.7	41.6	38.1	37.4	37.1	40	44.8	49.4	53.3	58.3	37
10 mm Fibre cement + Whisper 50 mm	22	26.1	26.1	26.8	27	28.9	33.6	41.3	46	47.5	45.8	46.3	46.5	43.6	45.6	51.1	56.3	59.3	41
1 mm Corten Sheet + Whisper 50 mm	15.6	18.7	19.6	19.4	19.8	23	27.7	35.4	42.1	42.8	41.5	42.3	45.3	50.1	54.4	59.7	65.4	66.6	35
3 mm Aluminium Plate + Whisper 50 mm	16.2	18.7	20.5	19.6	20.6	23.1	28.1	35.4	41.8	43.3	41.7	42.5	44.9	48.6	52	55.7	54.3	57.5	35
0.4mm Painted Steel Sheet + 50 mm	11.8	13.1	14.1	14	13.5	15.9	19.7	26.9	33.7	33.4	30.4	32	35.9	40.9	45.2	50.9	57.2	64.9	28

Stratocell Whisper® installed facing noise source, edges and joints sealed.

Disclaimer: As every installation is unique, we cannot guarantee the repeat occurrence of these test results. We recommend employing an acoustic consultant and using an accredited test lab prior to purchasing product.

Testing of Stratocell Whisper® under ISO10140-2 was conducted by Ecoscan bvba, Belgium. [www.ecoscan.be](http://www.ecoscan.be)